



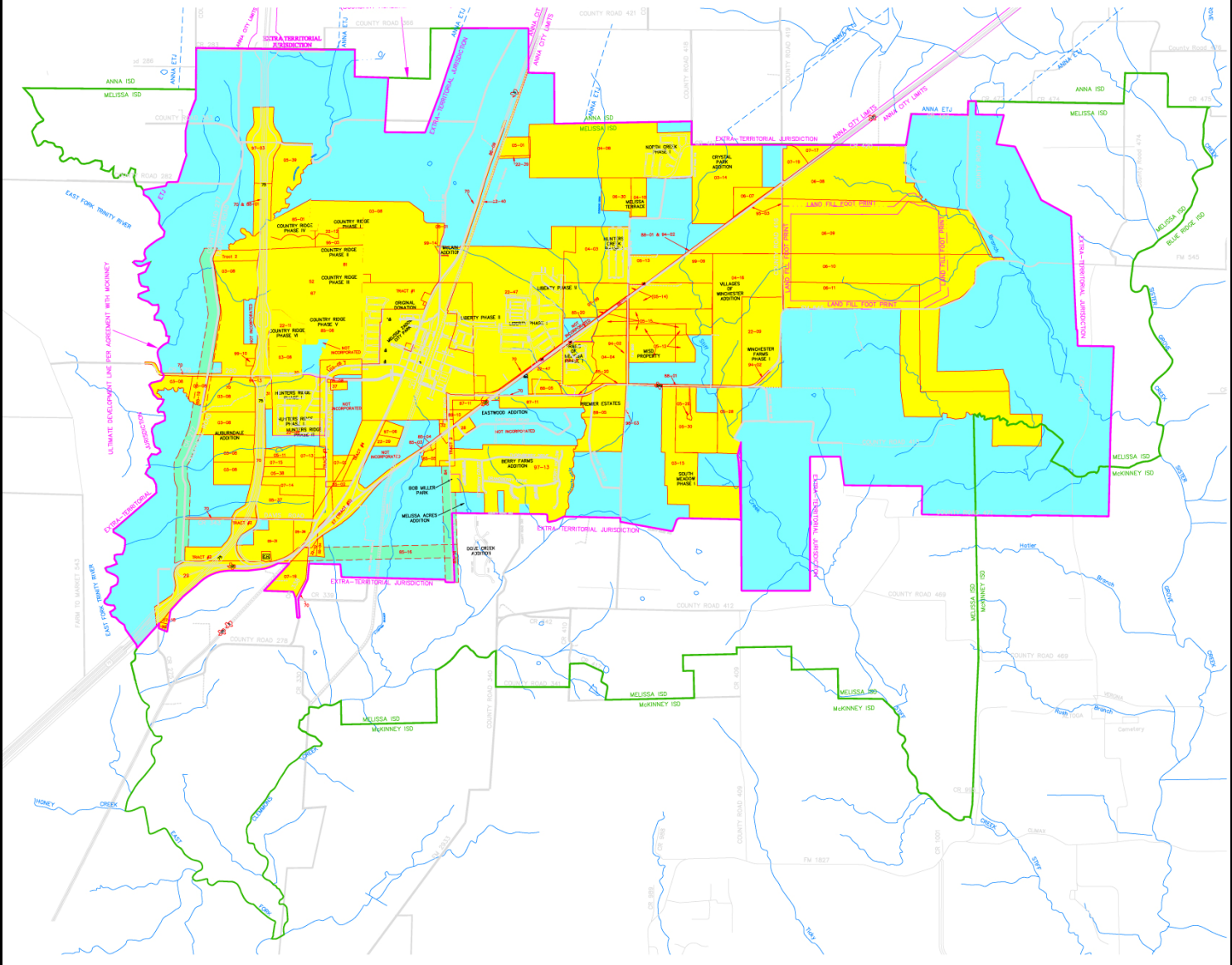
# City of Melissa, Texas

## 2009 Community Profile

Prepared by the Following Graduate Students at the School of Urban and Public Affairs, U.T. Arlington:

Abigail Azima  
Myung-Ji Bang  
Kristin Weegar (Editor)

# CITY OF MELISSA, TEXAS



LEGEND	
P	POST OFFICE
L	LIBRARY
1	ELEMENTARY SCHOOL
2	JR. HIGH SCHOOL
3	HIGH SCHOOL
W #1	CITY WATER WELL & PUMP STA. NO. 1
W #2	CITY WATER WELL & PUMP STA. NO. 2
T #1	CITY WATER TOWER & PUMP STATION NO. 1
LS	CITY SAN. SEWAGE LIFT STATION
	UNDEVELOPED STREETS AND ALLEYS
	UNIMPROVED ROADS AND DRIVEWAYS
	CITY LIMIT
	MELISSA EXTRA-TERRITORIAL JURISDICTION
	MELISSA-INDEPENDENT SCHOOL DISTRICT
	LAND FILL FOOT PRINT
	DISANNEXED CITY OF MELISSA
	MELISSA EXTRA-TERRITORIAL JURISDICTION
	ANNEXED CITY OF MELISSA

## Melissa, Texas



County: Collin  
Location: 38 miles north of Dallas on US Hwy 75  
Area: 21 square Miles  
Form of Government: Mayor/Council  
Number on Council: 6  
Municipal Police: 8  
Paid Fireman: 1  
Volunteer Firemen: 25  
City Zoning: YES  
Master Plan: YES Completed in 2006  
(Source: City of Melissa)

## History

Melissa settlement began in the 1840s although the town did not take off until the Houston and Texas Central Railway arrived in the early 1870s. The town's namesake is not certain since there were two railroad executives with daughters named Melissa. The town's railroad connection attracted population from Highland, Texas, a small community about 2.5 miles north of Melissa.

A post office was granted in the first half of 1873 and by 1884 the town had a population estimated at 100.

Melissa was on the line of the first Texas Interurban line (the Texas Electric Railway) which ran from Denison to Dallas beginning in 1908. The population increased to 400 by 1914. Melissa's connection to the electric railway insured that the town was "wired" and the townspeople also benefited from paved roads and a telephone exchange. All of this infrastructure was installed prior to 1920.

Melissa had all essential businesses plus a fully-enrolled school. As a shipping point, Melissa sent out 3,000 bales of cotton each year from two cotton gins. Disaster appeared in 1921 in the form of a tornado. In April of that year thirteen people were killed and both businesses and residences were destroyed. To make matters worse, a fire raged through town eight years later consuming many of the replacement buildings. Growth was curtailed by the Great Depression, mechanized farming and Defense industry jobs available in Dallas during WWII. From 500 people in the mid 1920s, Melissa declined to less than 300 by 1949. It increased to 375 by the mid 1960s and to just over 600 in 1980. The 2000 Census shows a substantial increase to over 1,300.

(Source: Melissa, Texas Forum)

## Demographics

POPULATION			
	2000	2007	2008
Melissa	1,350	4,047	4,688
Collin County	491,675	731,350	749,590

(Source: Texas State Data Center—UT-SA)

Note: 2009 estimates should be available by the end of October.

<b>TOTAL NUMBER OF HOUSEHOLDS</b>			
	2000	2007	2009
Melissa	501	1,025	1,617
Collin County	194,892	295,237	302,938

(Source NCTCOG)

<b>MEDIAN HOUSEHOLD INCOME</b>			
	2000	2009	2014
Melissa	\$60,761	\$64,376	\$62,054
Collin County	\$70,331	\$97,234	\$102,878

<b>AVERAGE HOUSEHOLD INCOME</b>			
	2000	2009	2014
Melissa	\$77,560	\$87,843	\$92,452
Collin County	\$89,506	\$124,474	\$130,712

<b>PER CAPITA INCOME</b>			
	2000	2009	2014
Melissa	\$26,193	\$31,179	\$32,968
Collin County	\$33,345	\$45,601	\$47,949

(Source: ESRI)

<b>MISCELLANEOUS DEMOGRAPHICS</b>			
	HH Size	Avg. Single Family Home Value	Median Age
Melissa	2.65	\$198,900	36.9

(Source: Collin Central Appraisal District/ESRI)

### **Employment – Census 2000 Data**

Population (16 years and older).....	928
In Labor Force.....	632
Civilian Labor Force.....	632
Employed.....	600
Unemployed.....	32
Armed Forces.....	0
Not in Labor Force.....	296
Employed Civilian Population.....	600
Management, Professional, and related.....	197
Service.....	57
Sales and Office.....	191
Farming, Fishing & Forestry.....	0
Construction, Extraction & Maintenance.....	66
Production, Transportation & Material Moving.....	89

(Source: Census 2000)

## **Top 10 Major Employers**

---

1. Melissa ISD.....	165
2. Calhar Utility Contractors.....	88
3. Kirk Concrete Construction, Inc.....	75
4. Alpha Industries Fabricated structural steel.....	55
5. City of Melissa City Government.....	30
6. McKinney Lumber.....	30
7. Sonic Drive-In.....	25
8. Bee Builder Supply.....	23
9. Mudpies & Lullabies.....	22
10. CMC Construction Services.....	15

(Source: City of Melissa)

## **Education**

---

Melissa ISD (A Texas Recognized School District)

Number of Enrolled Students: 1,367

Elementary (568 Students).....Harry McKillop Elementary

Middle School (429 Students).....Melissa Ridge Intermediate & Middle School

High School (370 Students).....Melissa High School

(Source: Melissa ISD)

Area Universities and Colleges

Collin County College

Texas A&M Commerce (Commerce)

Texas Woman's University (Denton)

University of North Texas (Denton)

University of Texas—Dallas (Richardson)

Southern Methodist University (Dallas)

## **Transportation**

---

Interstate.....US-75

State Highway.....Hwy 121, Hwy 5

Distance in Miles to:

Dallas.....38

Fort Worth.....65

Houston.....277

Chicago.....895

Los Angeles.....1,430

New York.....1,541

Air Service

McKinney.....Municipal

DFW International.....International

Dallas Love Field.....Regional

Alliance Airport.....Industrial

Rail Service

Provider..... Southern Pacific  
(Source: City of Melissa)

**Taxation**

Property Tax:

Rate per \$1,000 Valuation..... \$2.48

Breakdown by Entity:

Collin County.....\$0.2425  
Special District (Community College).....\$0.0863  
Melissa City.....\$0.61  
Melissa ISD..... \$1.54

(Source: Collin County Appraisal District)

Sales Tax:

Total Sales Tax Rate.....8.25%

Breakdown by Entity:

Municipal Sales Tax.....1%  
State Sales Tax.....6.25%  
Economic Development Sales Tax (4A)..... 0.5%  
Other Sales Tax (4B).....0.5%

Total Taxable Value..... \$340 Million

(Source: City of Melissa)

**2009 Top 5 Property Valuations**

1. Hillwood RLD LP.....\$3,265,810
2. HFG VOM LP..... \$2,162,000
3. Alpha Industries Inc.....\$2,153,088
4. McKinney Lumber.....\$2,087,836
5. Zenith Finance & Construction.....\$2,047,724

(Source: City of Melissa)

**Dollar Value of Permits Issued**

2009.....\$8,294,883 (through 10-13-09)  
2008..... \$14,921,023  
2007..... \$21,396,300  
2006..... \$38,835,826  
2005..... \$31,350,075

(Source: City of Melissa)

**Economic Development**

Incentives

Tax Abatement..... NO  
Enterprise Zone.....NO  
Industrial Foundation.....NO  
Foreign Trade Zone.....NO  
Reinvestment Zone..... YES

Freeport Exemption..... NO  
 4A & 4B Economic Development Commissions..... YES  
 Chamber of Commerce.....Melissa Area Chamber of Commerce  
 Planning & Zoning Commission.....YES  
 (Source: City of Melissa)

**Utilities**

---

Electricity.....TXU Electric Delivery/Collin Grayson Electrical Cooperative  
 Natural Gas.....Atmos Energy  
 Water Supplier.....North Texas Municipal Water District  
 Sewer System.....North Texas Municipal Water District  
 (Source: City of Melissa)

**Community Information**

---

Media: Local TV Stations and Cable Available

Churches: 6 Protestant

Recreation:

Parks: 3

Area Lakes: 3

Country Clubs: 1

Public Golf Courses: 1

Library: 1

Area Attractions:

Annual County Live Stock Show

Horse Shows

Collin County Farm Museum

Collin County Youth Park

Community Carnival

Climate:

Annual Average Temperature: 65.7 F

Annual Average Precipitation: 33.22"

Annual Average Snow Fall: 2.70"

Collin County Carbon Monoxide Emissions (Tons): 111.5 in a 24 hour period

Finance:

First National Bank of Trenton, Melissa Branch

(Sources: City of Melissa, NCTCOG)

**For More Information**

---



City of Melissa Municipal Center  
 901 State Highway 121  
 Melissa, TX 75454-9501  
 Call (972) 838-2338  
 Fax (972) 837-2452  
 Monday - Friday  
 8:00am to 5:00pm